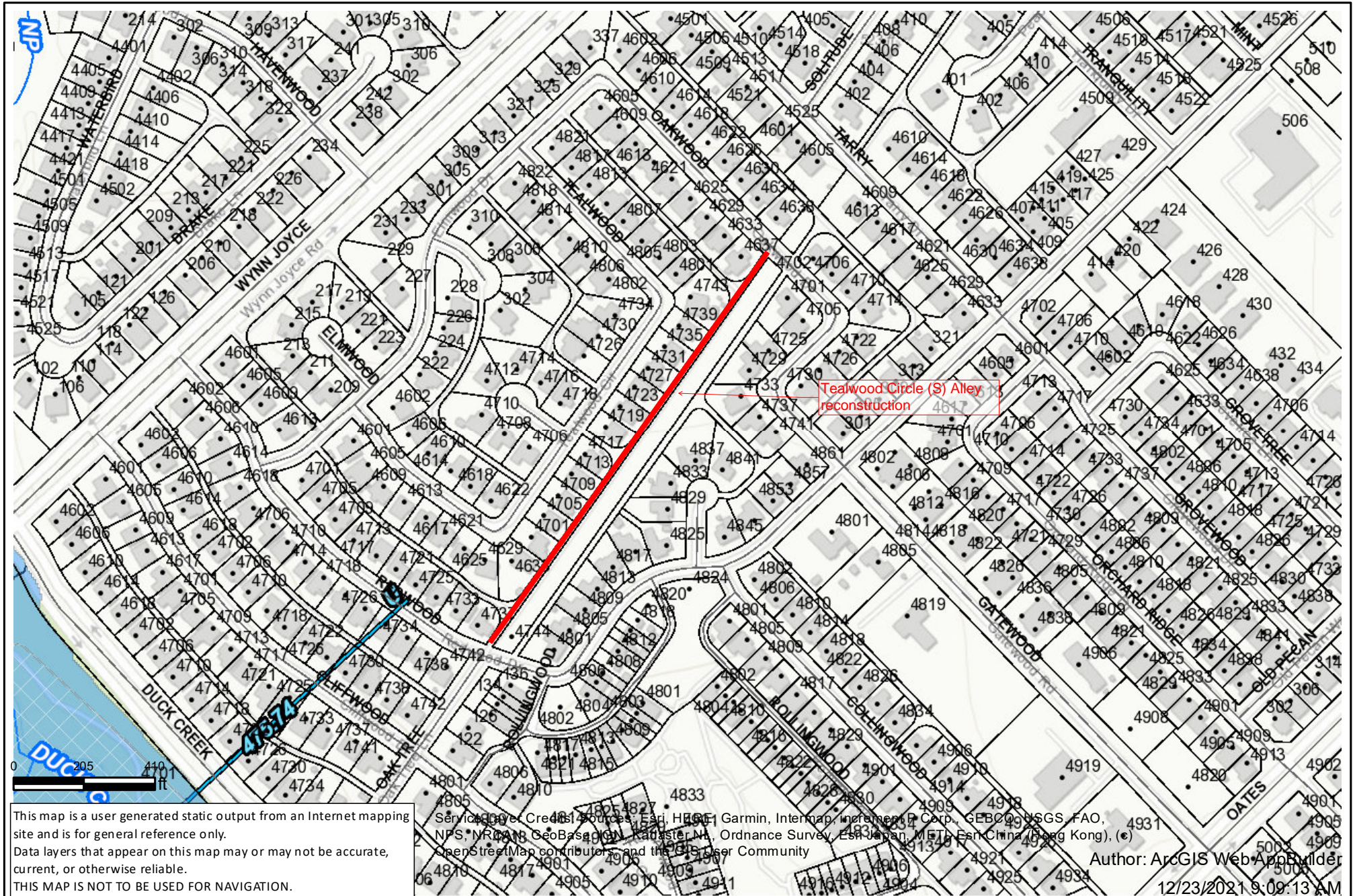


Tealwood Circle (S) Alley (Redwood to Oakwood)



This map is a user generated static output from an Internet mapping site and is for general reference only.
Data layers that appear on this map may or may not be accurate, current, or otherwise reliable.
THIS MAP IS NOT TO BE USED FOR NAVIGATION.

Services provided by Esri, HERE, Garmin, Intermap, increment P Corp., GEBCO, USGS, FAO, NPS, NRCAN, GeoBC, IGN, Kadaster NL, Ordnance Survey, Esri Japan, METI, Esri China (Beijing), Esri China (Hong Kong), Swisstopo, Surostar SA, CNRS, IGN, and the GIS User Community
Author: ArcGIS Web AppBuilder
12/23/2021 9:09:13 AM